



# Encrypted file exchange - simple and secure!

## Using Cryptshare is made even easier with integration into IBM Lotus Notes

Relieve your e-mail infrastructure from large file attachments and make it possible for your users to exchange files securely with any external business partner, supplier or customer directly from Lotus Notes.

## How does it work?

Cryptshare for Notes is seamlessly integrated into the application interface of the Notes Client, which is already entrusted to your employees.

Files can automatically be detached on the server side with rules defined by you, and will then be transferred via the Cryptshare

server ensuring security and freeing your e-mail server from unnecessary volumes of attachments. Senders and recipients are automatically informed about this process providing tracking data.

A manual transfer can also be made by clicking on the SmartIcon or by using Cryptshare widgets; users can transfer files safely and easily in an ad hoc manner when they need to.

Your external business partners, customers or suppliers can send files that are too large or too confidential for e-mail back to you via the existing web portal of your Cryptshare server. They do not need a licence or to install client software for this, and there is no

need to exchange certificates. The operating modes (manual/automatic) are available for groups of users and are configurable by you. You can also configure how and when data is transferred via Cryptshare, or sent via the normal mail routing process.

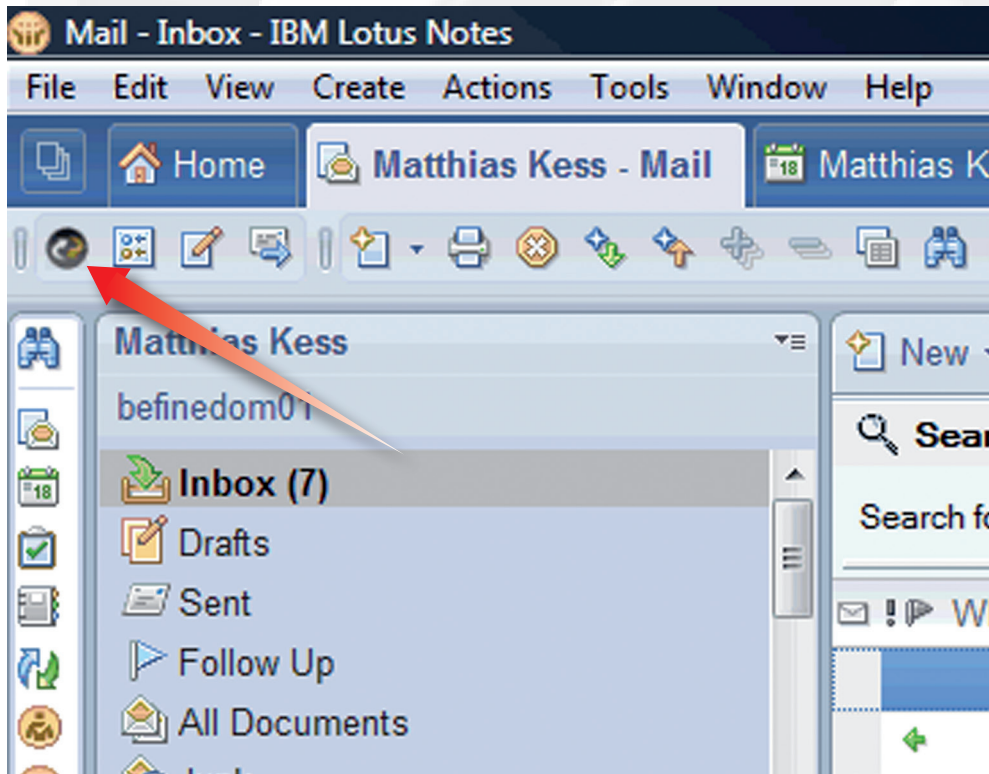
## Advantages

Your e-mail system is relieved of large data volumes, as these do not run via the Domino router but are transferred over the Cryptshare server. There are considerable savings made to the costs of your e-mail systems because of this.

You can also be sure that the data sent reaches its destination and e-mail size limitations on the receiver side do not cause a problem. The notification to the receiver is simply a message and a download link but no large data volume as the files can be retrieved by https after use of the correct password. In addition you receive confirmation of receipt from the system when the files have been downloaded by the recipient.

Exchanging confidential or large volumes of information is possible on an ad hoc basis and bi-directionally, giving great flexibility.

Crucially a complete audit trail is maintained: all transfer activities are recorded in detail in a log database, and the sender is notified at each stage of the transfer. No more excuses from receivers!



*Cryptshare transfer is the safe alternative for sending e-mails – and it's just a mouse click away for your users.*

# Encrypted file exchange - simple and secure!

## Why should you upgrade your existing Cryptshare installation to Cryptshare for Notes?

Cryptshare for Notes is a useful supplement to your pre-existing Cryptshare installation.

With the rules-based operating mode, you can guarantee that your data is always transferred securely in the best way for your business and does not require the user to make a decision about when to use this secure method.

In the manual operating mode, Cryptshare for Notes makes secure data transfer even easier and more intuitive for users, which increases user acceptance.

## Cryptshare for Notes offers the following benefits for users:

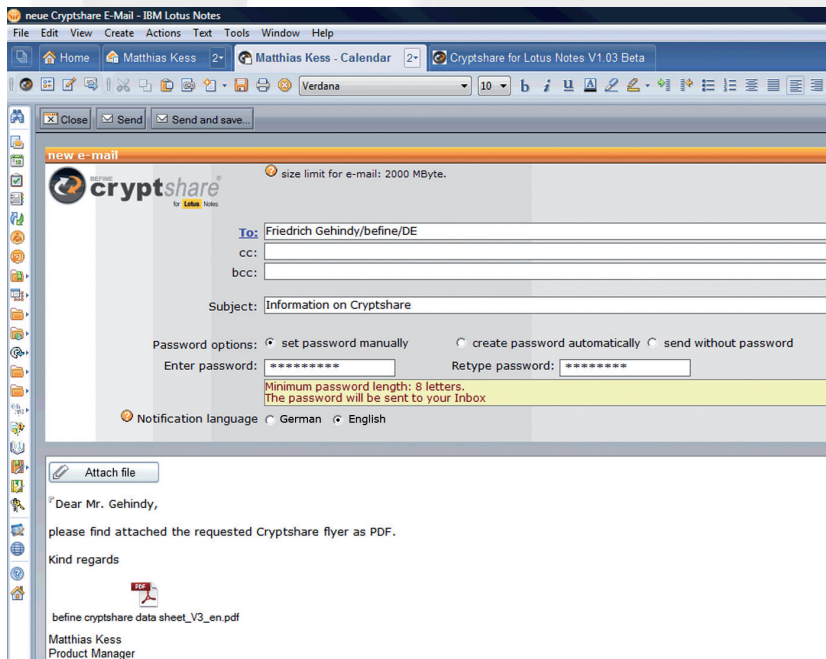
- All address books integrated in Notes
- LDAP directories and, if applicable
- Your CRM system are made available for addressing transfers.
- Groups can also be addressed this way.
- Your users can use the Lotus Notes e-mail editor to write messages having all the usual formatting options available.
- Use of Cryptshare is more convenient as you are using your normal e-mail workflow.

- Users are no longer inhibited sending large files but have an easy and secure alternative.
- Attachments can be handled by Cryptshare automatically if you set up server-side rules.
- Sent items can be stored in the users' mailfile's folder structure

## System requirements:

Lotus Domino Server Version 7.0 (or higher), with JAVA JVM 1.4.2 (or higher) based on MS Windows 2003 or 2008 (32 bit).

Cryptshare server/virtual appliance/hardware appliance of version 2.4.0 (or higher).



*The entry form is oriented towards the Notes e-mail form entrusted to your users*

